

Sunflowers & Honey

KIM SCHAEFER



100
years



Be Happy for Sunshine Quilt designed by: **Kim Schaefer** • Quilt Size: **38" x 58"**
Skill Level: **Beginner** • andoverfabrics.com

andover

•
•
• makower.uk
•

Free Pattern Download Available

1384 Broadway New York, NY 10018
Tel. (800) 223-5678 • andoverfabrics.com

7/15/21

Be Happy for Sunshine Quilt

Introducing Andover Fabrics new collection: **SUNFLOWERS & HONEY** by Kim Schaefer

Quilt designed by Kim Schaefer



Quilt finishes 38" x 58"

Let the sunshine in with this delightful wall/throw quilt. The printed sunflowers are the focal point, and they are framed by "buzzy bee" and honeycomb prints. The easy to piece borders are simple enough for beginner quilters.

Cutting Directions

Note: Read assembly directions before cutting patches. All measurements are cut sizes and include 1/4" seam allowances. A fat 1/8 is a 9" x 20"-22" cut of fabric. A fat 1/4 is an 18" x 20"-22" cut. Borders are cut the exact lengths required plus 1/4" seam allowances. WOF designates the width of fabric from selvedge to selvedge (approximately 42" wide).

Fabric A

Fussy-cut (1) panel 22 1/2" x 42 1/2"

Fabric B

Cut (5) strips 3 1/2" x WOF, pieced to make the following:

(2) borders 3 1/2" x 52 1/2"

(2) borders 3 1/2" x 38 1/2"

Fabric C

Cut (4) strips 1 1/2" x WOF, pieced to make the following:

(2) borders 1 1/2" x 42 1/2"

(2) borders 1 1/2" x 24 1/2"

Cut (4) rectangles 2 1/2" x 4 1/2"

Fabric D

Cut (8) rectangles 2 1/2" x 4 1/2"

2 Stripes From each:

Cut (8) squares 2 1/2" for corner blocks

14 Prints From each:

Cut (4) rectangles 2 1/2" x 4 1/2"

Binding

Cut (5) strips 2 1/2" x WOF for binding

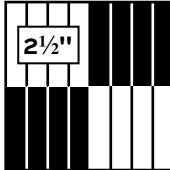
Backing

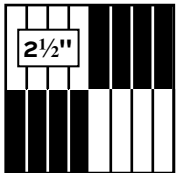
Cut (2) panels 32" x 44", pieced to fit quilt top with overlap on all sides

Fabric Requirements

		Yardage	Fabric
Fabric A	center	1 panel (2/3 yard)	9985 YK
Fabric B	border	5/8 yard	9991 KY
Fabric C	border	1/4 yard	9629 K
Fabric D	border	fat 1/8 yard	9629 G
2 Stripes	corners	fat 1/8 yard ea.	
	9991 K	9991 L	
14 Prints		fat 1/8 yard ea.	
	9986 K	9986 L	9987 K 9987 L
	9988 YK	*9988 YL	9989 K 9989 L
	9989 Y	9990 K	9990 L **9629 L
	9629 Y	9629 YK	
Binding		3/8 yard	*9988 YL
Backing		2 1/2 yards	**9629 L

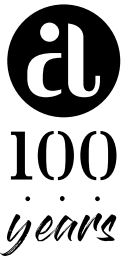
Making the Quilt

1. Be sure to include an even width of the gold stripe print on the sides of the center panel, and an even width at the top and bottom. Sew the long Fabric C borders to the sides of the panel, and the short borders to the top and bottom.
2. Referring to the Four-Patch Block diagram, join 4 stripe fabric squares alternately as shown to make the block. Note orientation of the stripe. Make 4 blocks.
3. Referring to the Quilt Diagram, arrange the rectangles around the quilt. There are 12 patches in the top and bottom borders and 22 in the side borders. Position them as shown or as you desire. Note the Fabric D green rectangles in each corner. Once you are satisfied with the arrangement, join the rectangles to make each border. Sew the long pieced borders to the sides. Join a Four-Patch block to each end of short borders, rotating the blocks as shown. Sew the short borders to the top and bottom.
4. Sew the long Fabric B borders to the sides. Join a Four-Patch Block to each end of short borders, rotating the blocks as shown. Sew to the top and bottom.



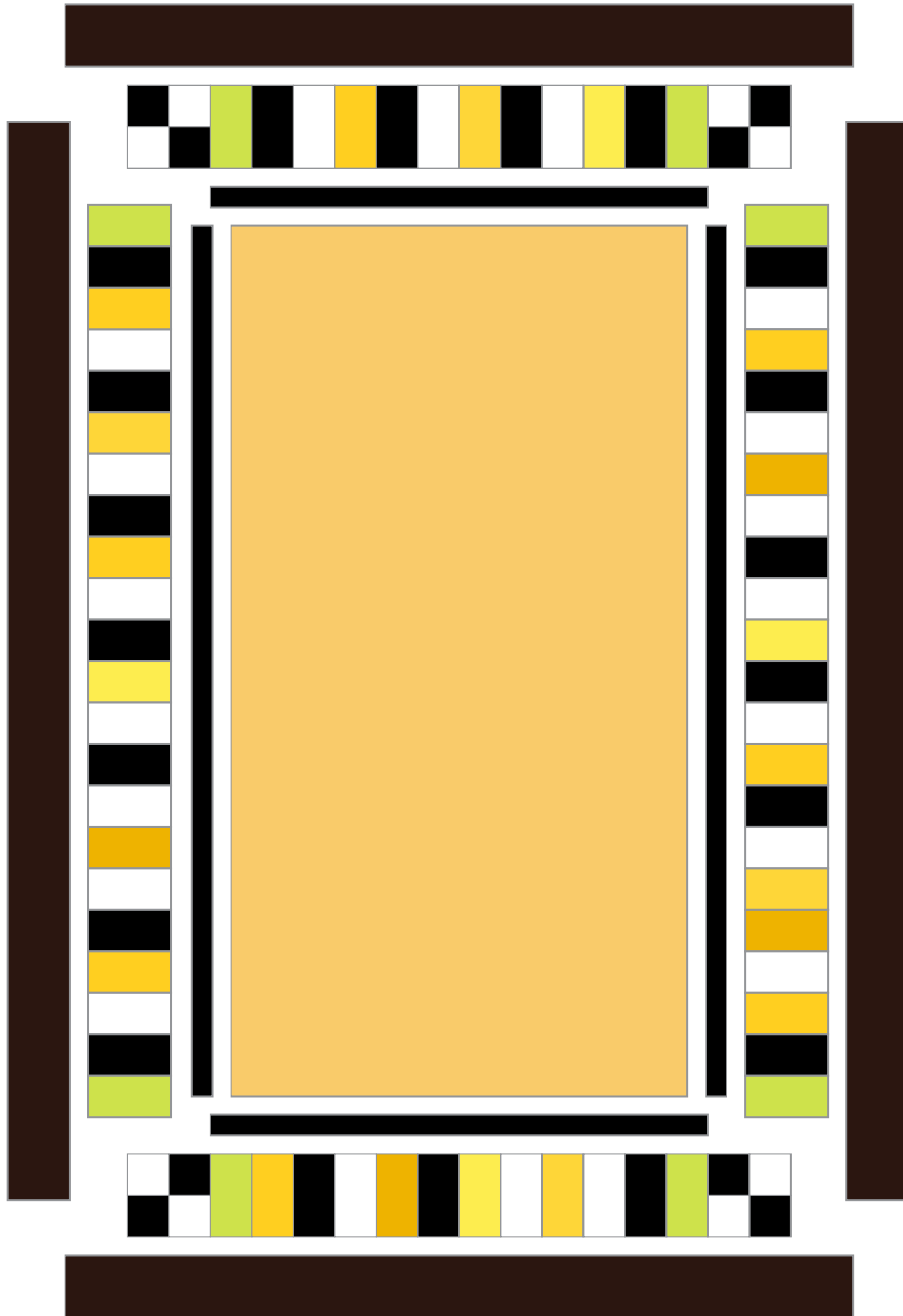
**Four-Patch
Make 4**

Bee Happy for Sunshine Quilt



Finishing the Quilt

5. Layer the quilt with batting and backing and baste. Quilt in the ditch around rectangle patches and borders. Quilt around the printed motifs in the center panel. Bind to finish the quilt.



Quilt Diagram

Sunflowers & Honey

KIM SCHAEFER



9985 KL



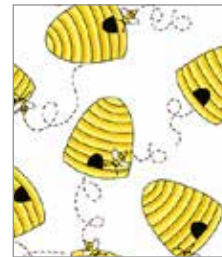
9985 YK*



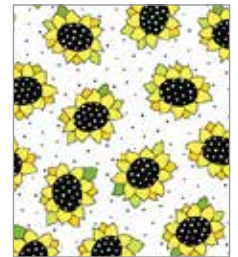
9987 K*



9986 K*



9987 L*



9986 L*



9987 Y



9986 Y



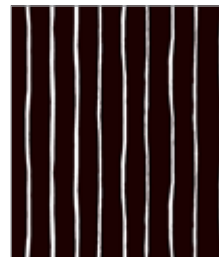
9990 K*



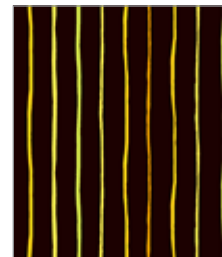
9990 L*



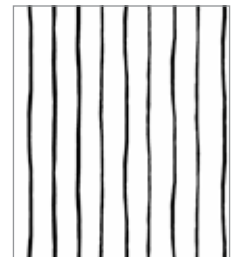
9990 Y



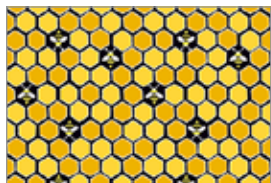
9991 K*



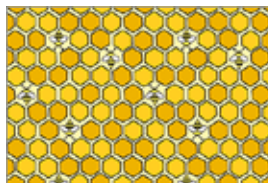
9991 KY*



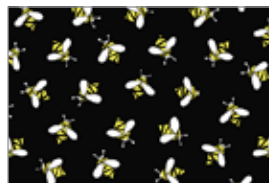
9991 L*



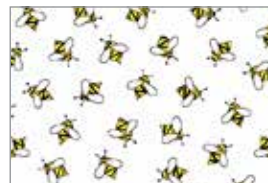
9988 YK*



9988 YL*



9989 K*



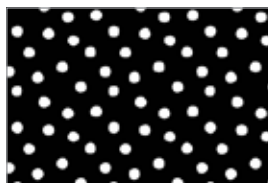
9989 L*



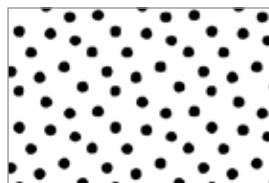
9989 Y*



9629 G*



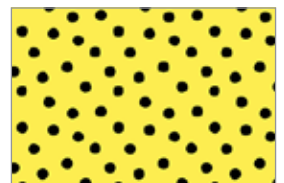
9629 K*



9629 L*



9629 Y*



9629 YK*

*Indicates fabric used in quilt pattern. Panel shown at 10%, all other fabrics shown are 25% of actual size.

andover

•
•
• makower.uk

Free Pattern Download Available

1384 Broadway New York, NY 10018

Tel. (800) 223-5678 • andoverfabrics.com